

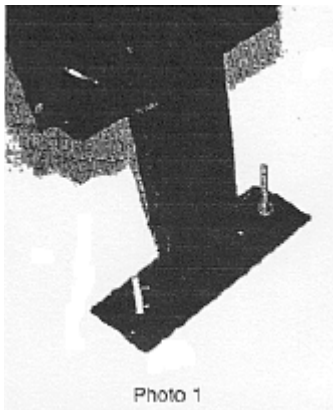
## Installation Instructions for the Marquee Theater Chairs

### STEP 1:

**Mount your leg standards on the center to center layout to your floor. This measurement will depend on which chair width you ordered. Please verify with your sales associate which chair width you ordered.**

**Floor Mount:** ¼" – 20 anchor with Hex Nut. Use 7/16" (11 mm. wrench will fit 7/16" Hex nuts and bolts) wrench or socket to tighten.

1. Concrete:
  - a. Install leg standards over anchors in the proper place (center, wall ends, and/or aisles) and at the proper incline (if applicable).
  - b. Place hex nuts over anchors. Hex nuts may be left loose to facilitate installation of backs.
2. Wood Floor:
  - a. Install leg standards over laid out or pre-drilled locations.
  - b. Secure leg standards with proper screws.



**Once you have mounted your leg standards to your floor you will want to attach the backs on next.**

#### *Helpful Note:*

You may want to leave your leg standard hardware a little loose until back and seat are attached.

### STEP 2:

**Attach backs to the legs standards.**

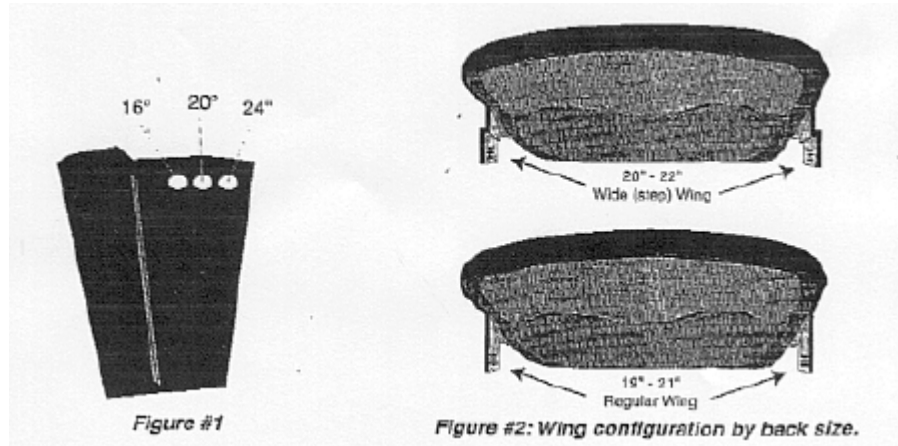
- A. Loosely place ¼" – 20 bolts with nuts (these are special locking screws supplied in the lower holes at the area of the back assembly point on all standards), tighten with a 7/16" (11 mm. wrench will fit 7/16" Hex nut and bolts) wrench socket.

*Note: Each leg standard requires 2 bolts and 2 nuts for proper installation of backs. Torque should not exceed 6 pounds.*

- B. Starting at the first row and at one end of the aisle, place a back over the lower bolts on the standard and position the upper hole of the back wing bracket at the proper back pitch (see Figure #1).
- C. Insert a bolt into the end standard; leave bolt loose.
- D. Insert the next back into the lower two (2) screws between the leg standards, as with the first chair.

## Installation Instructions for the Marquee Theater Chairs

- E. Adjust to proper back pitch. Place a screw through the wing bracket of the first back and through the standards and the wing bracket of the second back. Place an acorn nut, loosely, on the bolt to hold both wing brackets into position.
- F. Follow these steps throughout the row and all other rows.
- G. Once all of the backs are in place, securely tighten all backs and leg standards.



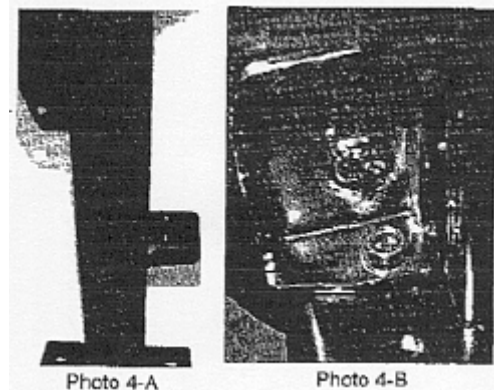
### STEP 3:

**Attach seats to the legs standards. There are two different installation options depending on which seat pan you ordered.**

#### **Installation of upholstered seats with steel or plastic seat pans & the fully upholstered seat pan.**

- A. Locate ear (or bracket) of seat over the rear hold of leg standard bracket (see photo 4-A & 4-B) (See figure 3 for seat sizes).
- B. Install attaching hardware and securely tighten.

*Note: Each seat requires 2 bolts, A 5/16" – 18 washer head screw with nut. Use a 1/2" (there is no metric size which will fit 1/2" bolts) wrench or socket to tighten. Torque should not exceed 16 ft. lbs.*

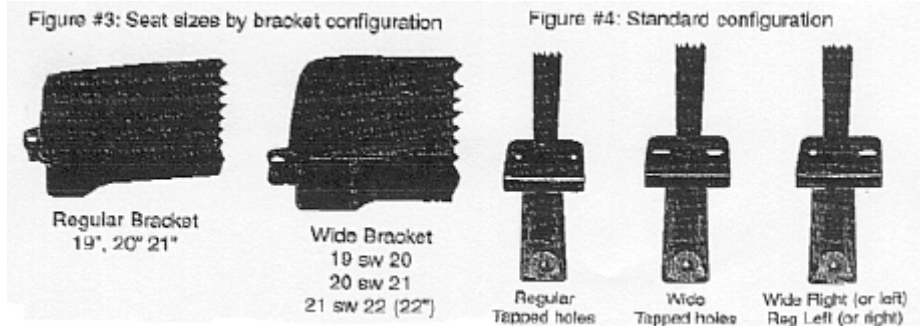


#### **Installation of seats without steel seat pan.**

- A. Seats are placed on seat arm assembly attached to standards over the slotted holes on the seat arm assembly.

## Installation Instructions for the Marquee Theater Chairs

- B. The proper bolts are then used to secure the seats to the seat arm. Securely tighten  $\frac{1}{4}$ " – 20 carriage bolts with nuts. Use a  $7/16$ " (11mm) wrench or socket.



### STEP 4:

#### Attach the armrests.

##### Non cup holder armrest.

- A. The armrests are installed using a dovetailing method. Security screws are used to prevent the removal of arms after they have been installed (See Photo 5).
- B. Place routed dovetail holes in the armrests over the dovetail prongs on the leg standard (See Photo 5).

*Note: Slot in the armrests should be placed towards the front of the chair.*

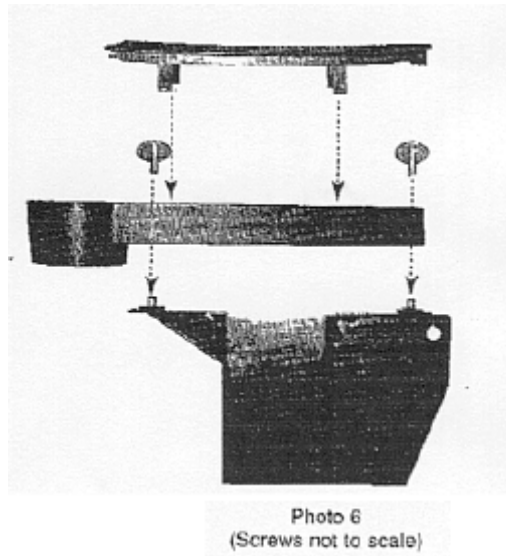
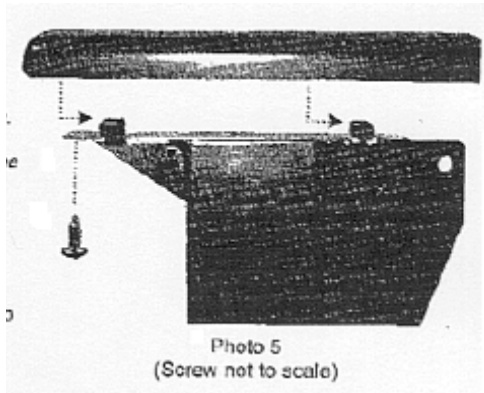
*Note: Chairs with back fold tablet arms and end standards with concealed aisle lights have factory installed armrests.*

- C. A rubber mallet is required to drive the armrest into place to avoid marring the arms.
- D. Once the armrests are in place, sight down each aisle to ensure that all arms line up properly.
- E. Security screws must be installed into each armrest before final inspection. Secure screws tightly with #2 Phillips bit.

##### Plastic cup holder armrest:

- A. Some plastic cup holders arms are installed with two #10 24 x  $5/8$ " machine screws with two flat washers. The machines screws have a square recess head and the square recess bits are provided with the hardware.
- B. Place the armrest on the leg standard, lining up the threaded weld-nuts on the leg standard with the holes in the armrest. Secure the armrest to the standard. Install the cover over the armrest once it is secured to the standard (See Photo 6).

## Installation Instructions for the Marquee Theater Chairs



**This is what the completed chair will look like.**



If you need assistance with assembly or installation please call our sales office.  
We are available Monday – Friday 9 AM to 5 PM EST.

[www.SeatsandChairs.com](http://www.SeatsandChairs.com)

Toll-Free: 1-800-632-7657

Office: 727-393-0400

Fax: 727-393-9600

Email: [info@seatsandchairs.com](mailto:info@seatsandchairs.com)